

Grasping
GOD'S WORD

Grasping GOD'S WORD

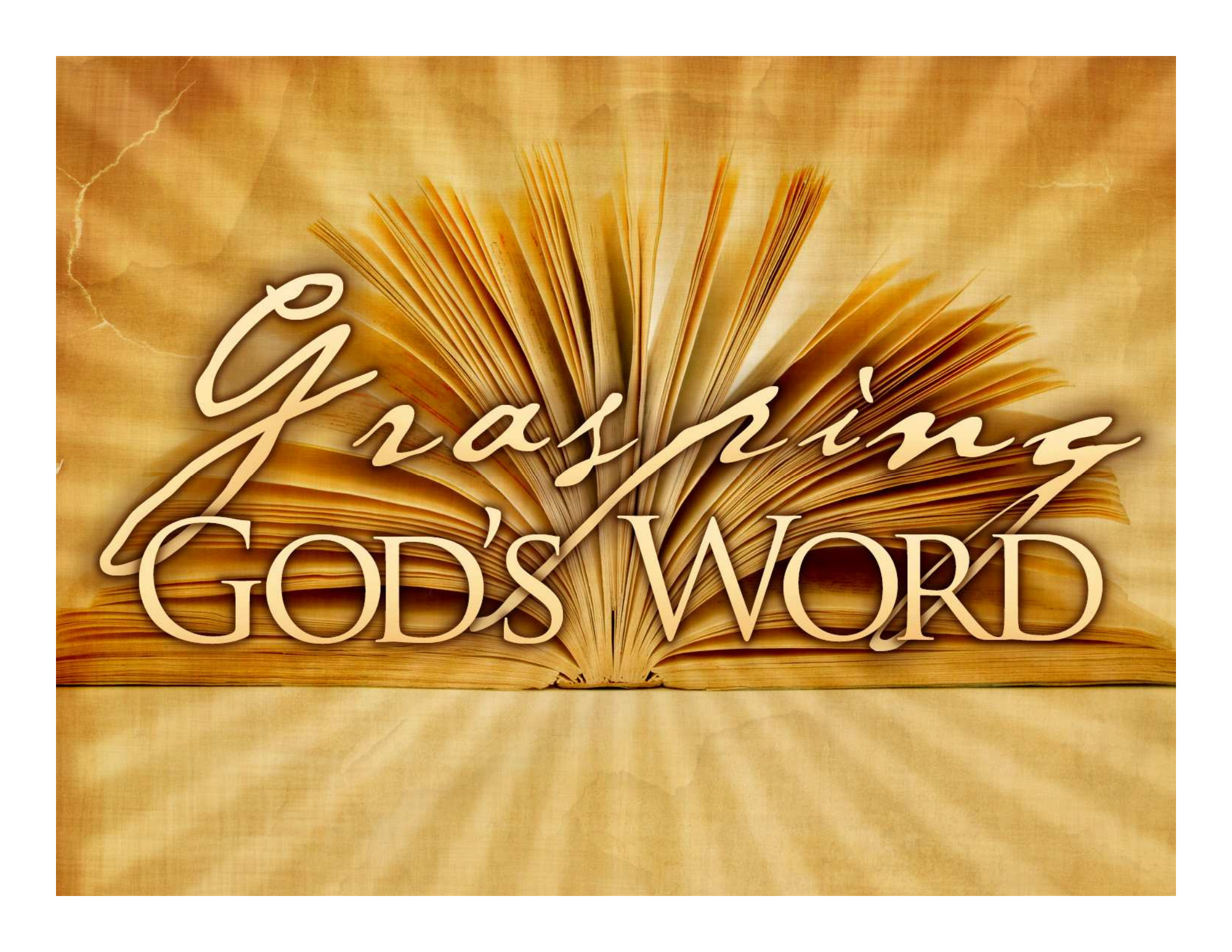
- **Col. 3:22**
- Slaves, obey your earthly masters in everything; and do it, not only when their eye is on you and to win their favor, but with sincerity of heart and reverence for the Lord.

Grasping GOD'S WORD

- **Colossians 4:1**
- Masters, provide your slaves with what is right and fair, because you know that you also have a Master in heaven.

Grasping GOD'S WORD

- Col. 3:22 Slaves, obey your earthly masters in everything; and do it, not only when their eye is on you and to win their favor, but with sincerity of heart and reverence for the Lord. 23Whatever you do, work at it with all your heart, as working for the Lord, not for men, 24since you know that you will receive an inheritance from the Lord as a reward. It is the Lord Christ you are serving. 25Anyone who does wrong will be repaid for his wrong, and there is no favoritism.



Grasping
GOD'S WORD

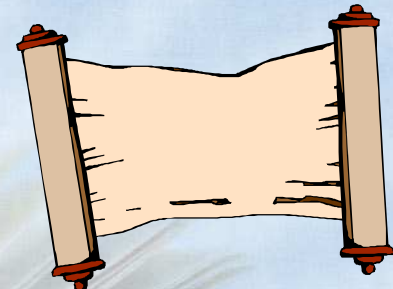
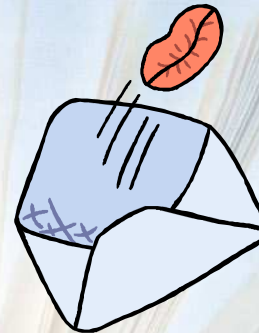
Who Controls the Meaning?

- Does the reader or the author control meaning?
 - Reader response – reader as the one who determines the meaning
 - Authorial intention – stresses the author in the determination of meaning

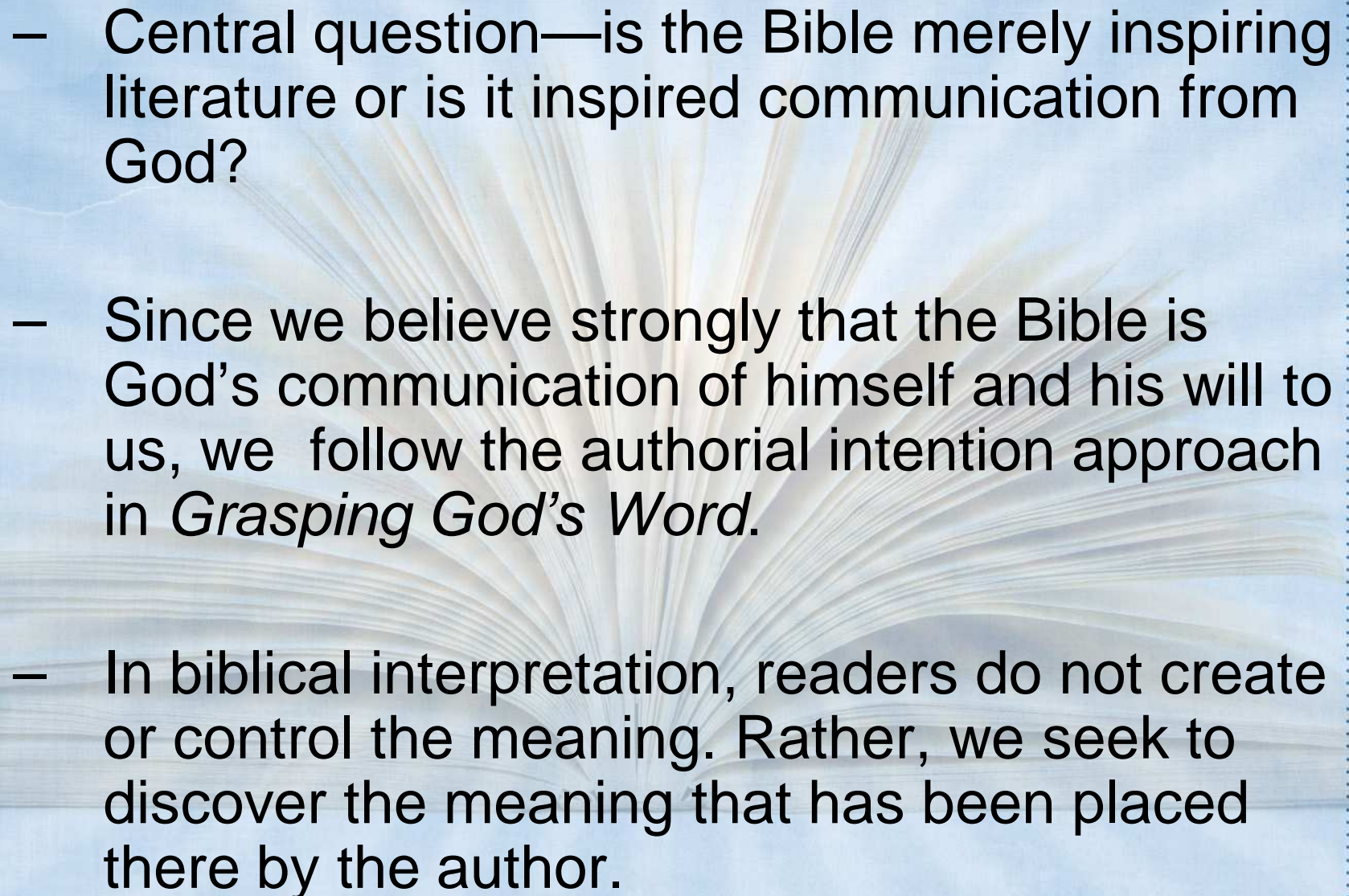
- Central issue — communication

- If we view the text as communication between the author and the reader, we should follow the authorial- intention approach.
- If we don't care what the author is trying to communicate, we are free to follow the reader response approach.

– Should we view these texts as communication?



– To ignore the author's intention in texts that should be viewed as communication can have serious negative consequences for the reader.

- 
- The background of the slide features a central image of an open book with its pages fanned out, set against a light blue sky with a white lightning bolt striking down from the top left. The entire scene is framed by a blue border with a dotted white line.
- Central question—is the Bible merely inspiring literature or is it inspired communication from God?
 - Since we believe strongly that the Bible is God’s communication of himself and his will to us, we follow the authorial intention approach in *Grasping God’s Word*.
 - In biblical interpretation, readers do not create or control the meaning. Rather, we seek to discover the meaning that has been placed there by the author.

• Definitions

Author

With reference to the Bible, the term “author” refers to both the human and divine author. God works through human authors to communicate.

Meaning

This term refers to what the author intended to communicate when he wrote the text. Meaning will be same for all Christians.

Application

This is the response of the reader to the author’s meaning communicated in the text. Application will vary from Christian to Christian.

• Definitions and the Interpretive Journey

Meaning

- 1 – Grasping the Text in Their Town
What did the text mean to the biblical audience?
- 2 – Measuring the Width of the River
What are the differences between the biblical audience and us?

Meaning

- 3 – Crossing the Principlizing Bridge
What is the theological principle in this text?

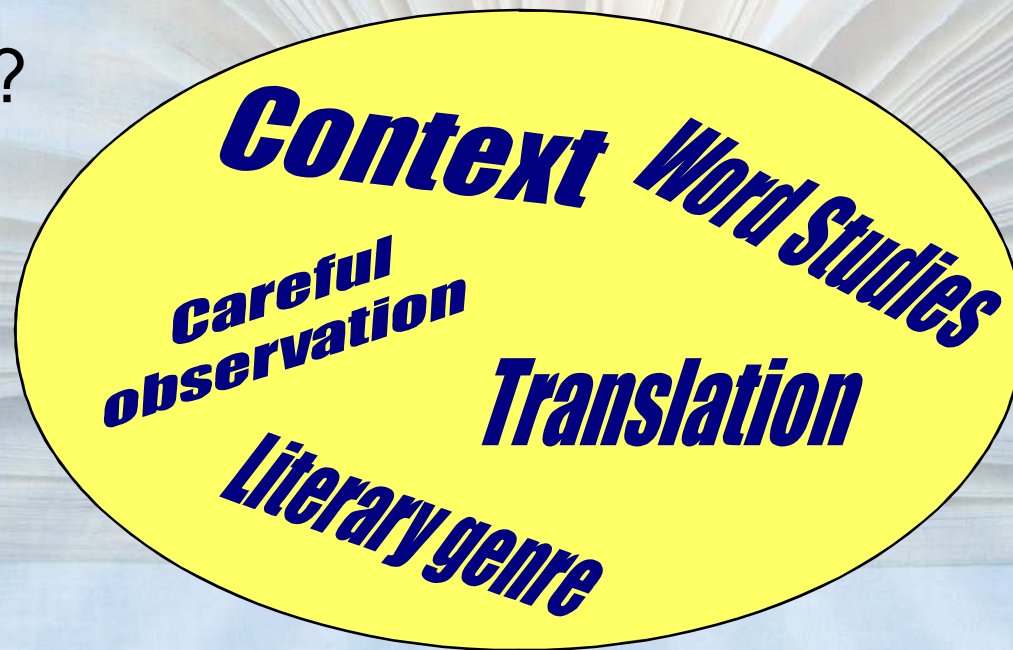
Application

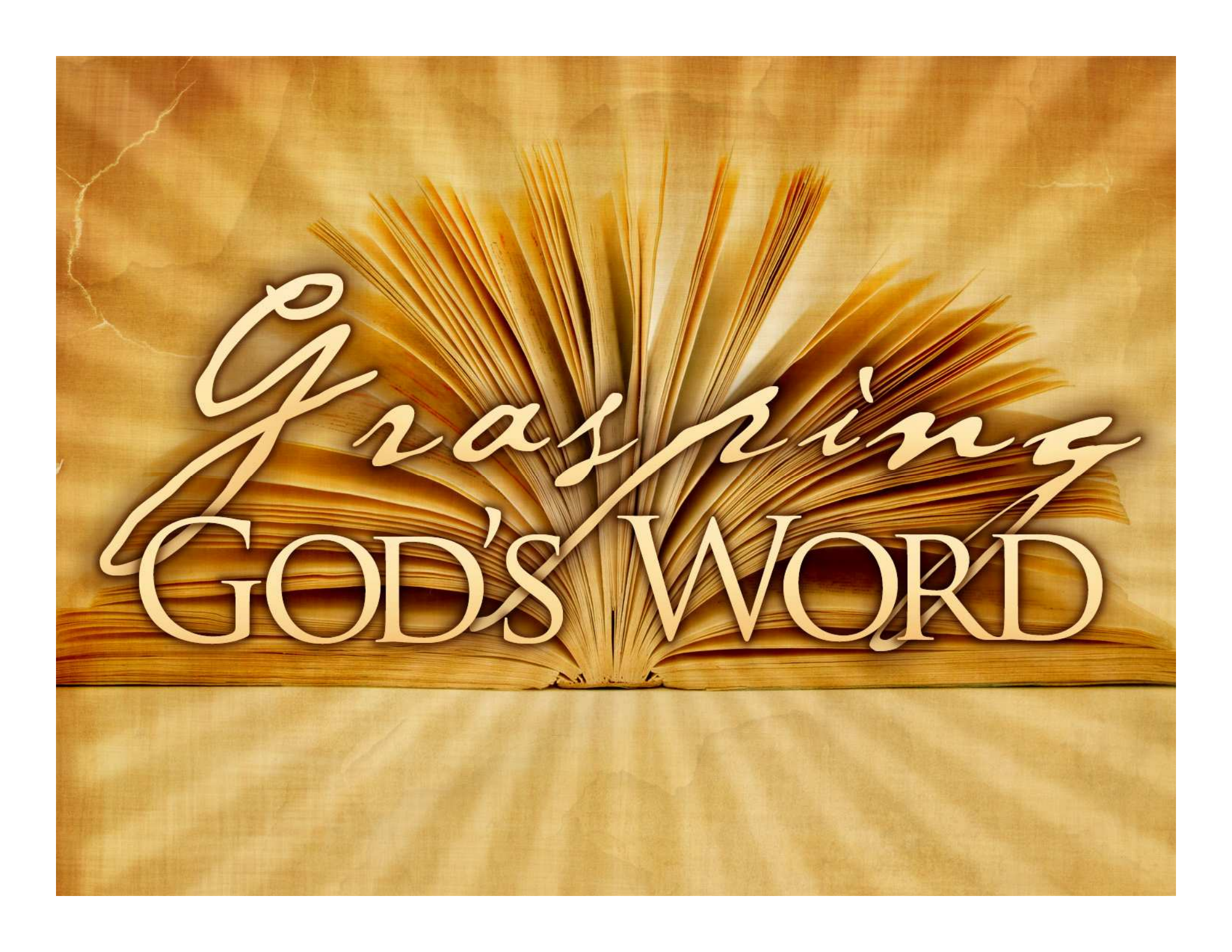
- 4 – Grasping the Text in Our Town
How should individual Christians today apply the theological principle(s) in their lives?

- Determining what the author meant

- For proper interpretation (communication) to take place, we must determine what the author meant.

- How?





Grasping
GOD'S WORD